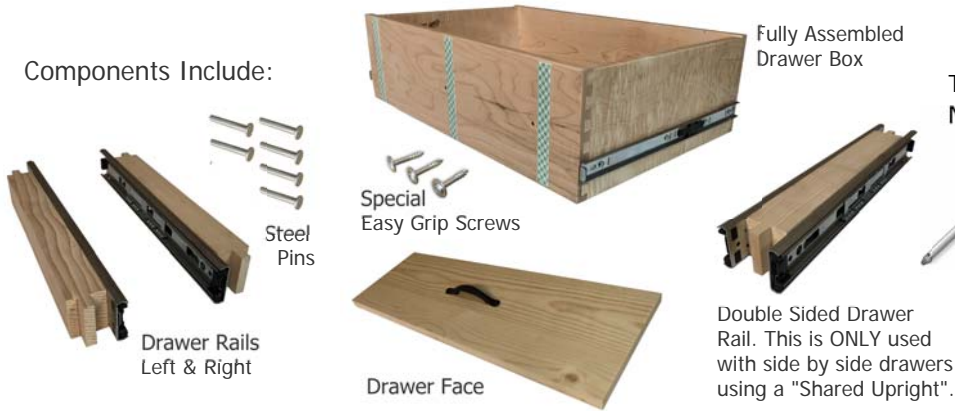
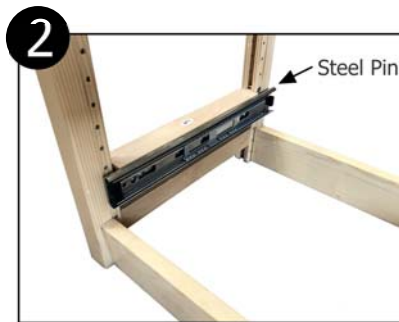
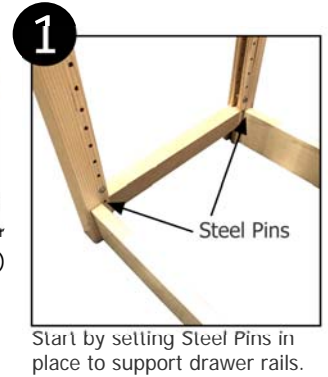


Drawer Installation

Components Include:



Tool Needed:
Philips Head Screw Driver (Not Included)



After the Steel Pins are set, insert Left and Right Drawer Rails to sit on top of pins. Insert a Steel Pin above on the rear upright for each Drawer Rail. This will prevent the drawer from falling when pulled out.



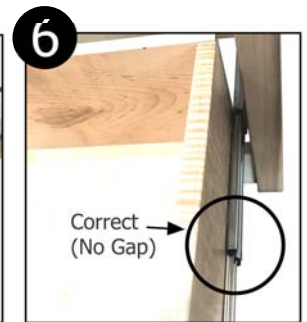
Pull suspensions partly out as shown. Then carefully slide drawer into this part on both sides. This can be a little difficult at first.



These parts should slide straight into each other.



Once they are correctly seated you will need to push the drawer very firmly into place. You will hear a click. Then pull the drawer out and it should open and close easily.

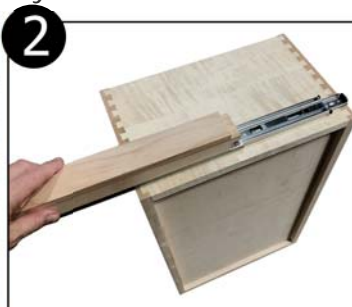


Need to remove the drawer?
Push this button on both rails at the same time to release.

If you are having any difficulty, here is an alternative method:



In this method, you will slide the drawer rails onto the drawers first. Do this for both sides.



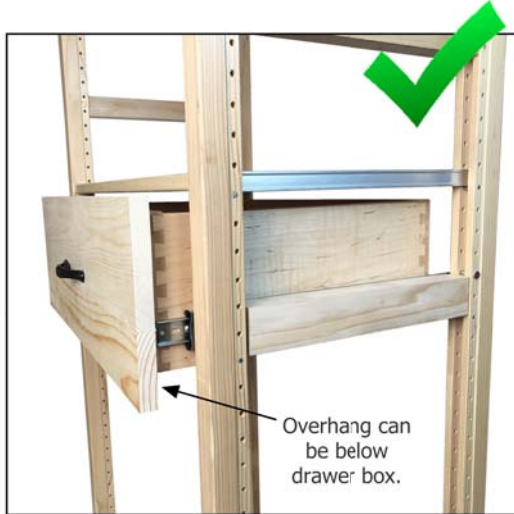
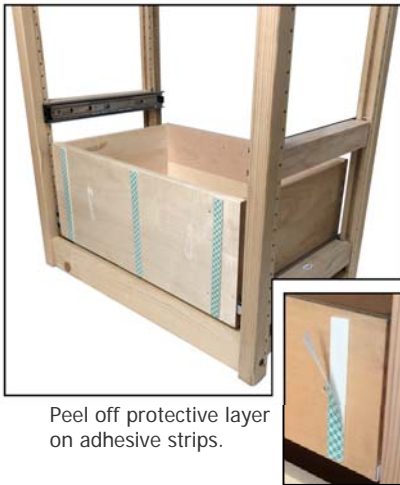
Then position the drawer at a severe angle, and slide the wood rails into the upright channels as shown. You may need an additional person to help you on larger drawers.



Questions? Call us Toll Free in US: (888) 989-1370
Monday - Friday, 8:30 - 5:00 Pacific Standard Time

Drawer Installation

After Drawer(s) are in place your next step is to mount the Solid Wood Drawer Front(s):



LIGHTLY press the Drawer Front onto the drawer box. Position the drawer front so that most gaps are the same size between the uprights and any shelf. The tape will allow you to remove the Front and reposition multiple times if needed.

IMPORTANT: There is no requirement on how you place the Drawer Front on the drawer box. It can be moved up or down to fit near a shelf as shown above.



Once you have the Drawer Front positioned the way you like, press it firmly in place. Then screw our "Easy Grip" screws through the drawer box into the Drawer Front for a permanent installation.

3" Jewelry Drawer

6" Standard Drawer

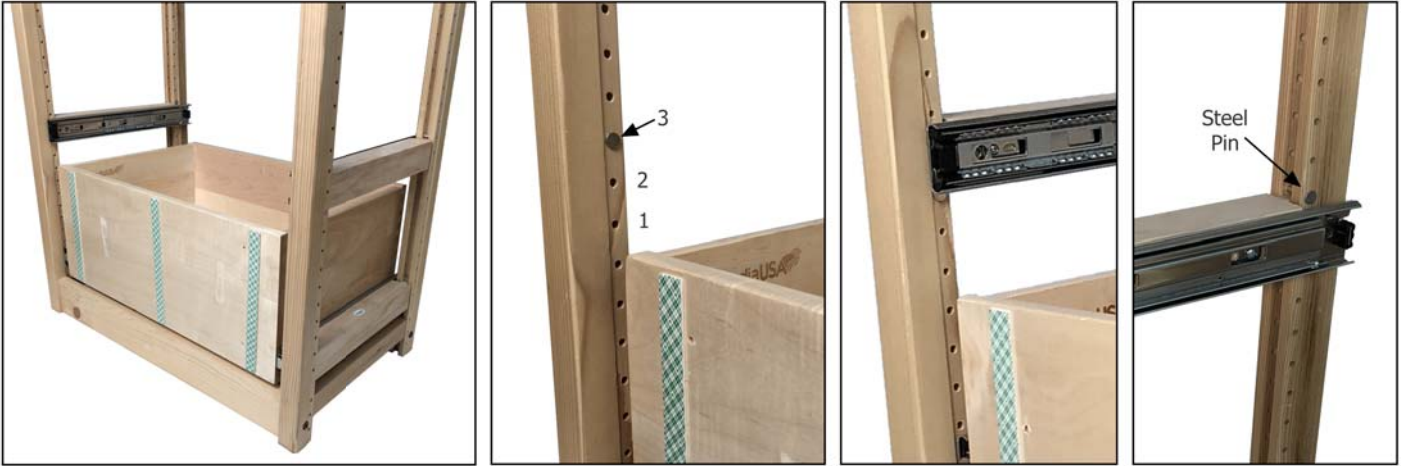
9" Extra Deep Drawer



Drawer Suspensions are FULL Extension so that you can access the entire inside of the drawer when pulled out.

Drawer Installation

How to install several drawers in a section:



You can set the first Drawer Rail on the lowest pin hole setting of the uprights. No bottom shelf is needed but can be placed for aesthetic reasons.

Set the 2nd set of Drawer Rails on the 3rd pin hole above the box just placed. Remember to add a pin above the Drawer Rail on the back upright to prevent the drawer from falling when it is pulled out.



Once all your drawers are in place, remove the protective layer on the adhesive strips.



Lightly press the first Drawer Front in place. You will want to be able to remove and adjust if needed.



Lightly press the next Drawer Front into position.



Lightly press the next Drawer Front into position. Adjust if needed.



Adjust all fronts to have equal gaps.



Once you have the Drawer Front positioned the way you like, press it firmly in place. Then screw our "Easy Grip" screws through the drawer box into the Drawer Front for a permanent installation.

